



32<sup>nd</sup> Annual  
**Reading Marathon**  
 PAWS and Read!



FROM THE UNIVERSITY OF UTAH

# READ 20 MINUTES EACH DAY!

## November 1-30, 2024

Challenge your kids, preschool through sixth grade, to read 20 minutes each day, or 600 minutes total, during the month of November. Track your minutes on the reading log on the back.

Submit your minutes for the whole month at [pbsutah.org/reading](https://pbsutah.org/reading) starting December 1 to receive your Adventure Pass. The pass includes tickets and coupons to your favorite museums, zoos, and activities around town.

Reading minutes must be entered on our website by December 31st, 2024!

**[pbsutah.org/reading](https://pbsutah.org/reading)**

|  |  |
|--|--|
| <p><b>October 26</b><br/>Kickoff Party</p>   | <p><b>November 1-30</b><br/>Read 20 minutes a day</p>                                      |
| <p><b>November 1</b><br/>Print off your reading log<br/><i>No need to register</i></p> | <p><b>December 1-31</b><br/>Submit minutes online<br/><i>Save/print adventure pass</i></p> |
| <p><b>2025 Start adventuring!</b></p>  |  |

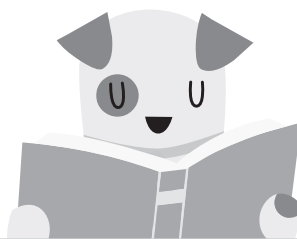
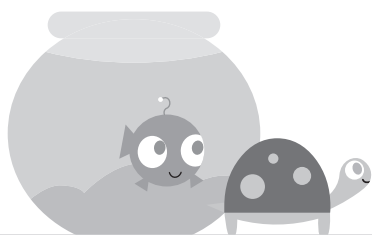


PBS UTAH'S EDUCATIONAL INITIATIVES FOR KIDS AND FAMILIES ARE SUPPORTED BY Beesley Family Foundation, Herbert L. and Elsa B. Michael Foundation, Lawrence T. & Janet T. Dee Foundation, R. Harold Burton Foundation, Ruth Eleanor Bamberger and John Ernest Bamberger Memorial Foundation, and the Sorenson Legacy Foundation

# READING LOG

Read 20 min. each day!

|                           |                           |                           |                           |                           |
|---------------------------|---------------------------|---------------------------|---------------------------|---------------------------|
| <b>Nov. 1</b><br>Minutes  | <b>Nov. 2</b><br>Minutes  | <b>Nov. 3</b><br>Minutes  | <b>Nov. 4</b><br>Minutes  | <b>Nov. 5</b><br>Minutes  |
| <b>Nov. 6</b><br>Minutes  | <b>Nov. 7</b><br>Minutes  | <b>Nov. 8</b><br>Minutes  | <b>Nov. 9</b><br>Minutes  | <b>Nov. 10</b><br>Minutes |
| <b>Nov. 11</b><br>Minutes | <b>Nov. 12</b><br>Minutes | <b>Nov. 13</b><br>Minutes | <b>Nov. 14</b><br>Minutes | <b>Nov. 15</b><br>Minutes |
| <b>Nov. 16</b><br>Minutes | <b>Nov. 17</b><br>Minutes | <b>Nov. 18</b><br>Minutes | <b>Nov. 19</b><br>Minutes | <b>Nov. 20</b><br>Minutes |
| <b>Nov. 21</b><br>Minutes | <b>Nov. 22</b><br>Minutes | <b>Nov. 23</b><br>Minutes | <b>Nov. 24</b><br>Minutes | <b>Nov. 25</b><br>Minutes |
| <b>Nov. 26</b><br>Minutes | <b>Nov. 27</b><br>Minutes | <b>Nov. 28</b><br>Minutes | <b>Nov. 29</b><br>Minutes | <b>Nov. 30</b><br>Minutes |



**Total**

|                     |
|---------------------|
| 600 minutes or more |
|---------------------|

Submit your total minutes at [pbsutah.org/reading](https://pbsutah.org/reading) between **December 1-31**

Child's Name: \_\_\_\_\_

**GRADE**  PreK/Kinder  1st  2nd  3rd  4th  5th  6th